



LIANJIE

PRODUCT CATALOGUE



Xiangyang Lianjie Mechanical&Electrical Co.,Ltd

CHINA'S LEADING RAILWAY EQUIPMENT MANUFACTURER

COMPANY INTRODUCTION

Xiangyang Lianjie Mechanical&Electrical Co., Ltd. is a high-tech enterprise specializing in railway inspection equipment, which integrates R&D, production and sales. We are committed to becoming a world-renowned railway equipment supplier. We adhere to the cultural concept of "customer first, outstanding brand, excellent team, innovation and development", listen to the requirements of global customers, design the competitive products.

We always believe that, only with the high quality products and services, we can go further. No matter what you need for railway equipment, Lianjie will provide the most suitable solution.

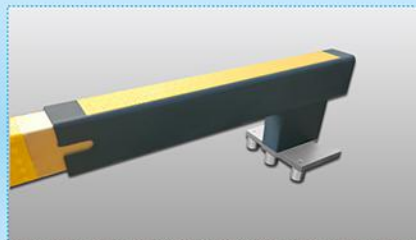


CONTENTS

P-01	Digital Track Gauge
P-02	7 Environmental Suitability Tests
P-03	Analogue Track Gauge
P-04	Railway Square Ruler
P-05	Portable Track Gauge Calibrator
P-06	Calibrator For Railway Track Gauge
P-07	Rail Wear Gauge
P-08	Rail Wear Gauge block
P-09	Rail Frog Wear Gauge
P-10	Rail Frog Wear Gauge block
P-11	Switch Rail Lateral Wear Gauge
P-12	Digital Rail Corrugation Wear Gauge
P-13	Switch Rail Height Gauge
P-14	Rail Opening Gauge
P-15	Contact Rail Gauge & Platform Gauge

P-16	Rail L-shaped Track Ruler
P-17	Rail Offset Ruler
P-18	Digital Rail Offset Ruler
P-19	1 Meter Rail Straight Edge
P-20	Digital Rail Straight Measuring Ruler
P-21	Frog Vertical Wear Gauge
P-22	Rail Web Width Measuring Device
P-23	Rail Feeler Gauge&Rail gap ruler
P-24	Rail Feeler Gauge Gap Ruler Combination
P-25	Rail Curve Measuring Tools
P-26	Rail Curve Measuring Tools-50m
P-27	Laser Curve (Versine) Device
P-28	Pointer Rail Thermometer
P-29	Rail Cant Device
P-30	Digital Rail Thermometer

■ Digital Track Gauge



Product introduction

This digital track gauge is special made for global market. Could be used for measuring the track gauge, check rail gauge, back to back distance, (superelevation), flangeway clearance.



Model parameters

unit(mm)

Model	GJC-TJG0	GJC-TJG1
Track gauge	1384-1470	1384-1470
Check rail gauge	1364-1450	1364-1450
Back to back distance	1344-1430	1344-1430
Superelevation range	±200	±200
Flangeway clearance	20-107	20-107
Superelevation resolution	0.05	0.1
Track gauge resolution	0.01	0.1
Track gauge max error	±0.25	±0.25
Superelevation max error	±0.3	±0.45
Aluminum package box	optional	

Details for other gauges e.g. 1000 1067 1520 1600 1676 and imperial type available on request.

7 ENVIRONMENTAL SUITABILITY TESTS



Electrostatic discharge experiment



Vibration test



Power frequency magnetic field test



High and low temperature test



Damp heat test



Radio frequency electromagnetic radiation test



Rain test

The main function of environmental testing equipment is to simulate one or more harsh environments with artificial methods in the laboratory to test the quality and performance of products.

After each new product is developed, it needs to go through rigorous testing. Such as whether the product can withstand drastic changes in temperature, strong interference from vibration, electromagnetic compatibility, waterproof function, etc.

All of these require environmental testing of the product before it is officially put into use.

■ Analogue Track Gauge



Product introduction

The analogue track gauge is used for measuring :

- Track gauge
- Check rail gauge
- Back to back distance
- Superelevation

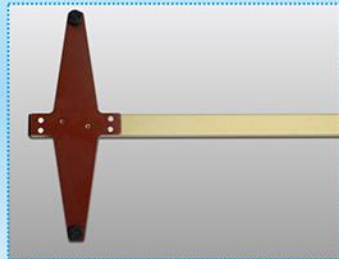
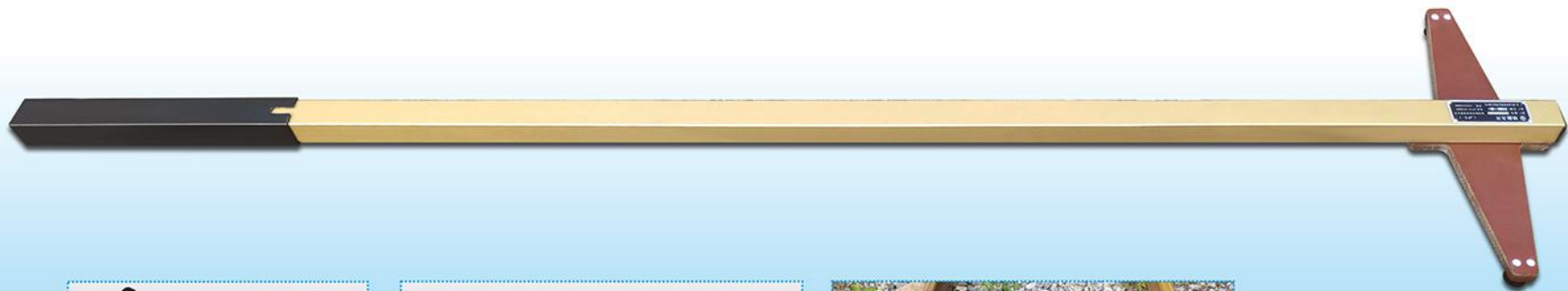


Model parameters

Model	unit(mm)				
	TGC-W-II 1000	TGC-W-II 1067	TGC-W-II 1435	TGC-W-II 1520	TGC-W-II 1676
Track gauge	975-1030	1042-1102	1410-1470	1493-1560	1650-1712
Check rail gauge	950-970	1013-1033	1381-1401	1466-1486	1622-1642
Back to back distance	907-927	970-990	1338-1358	1423-1443	1579-1599
Super-elevation range	±150	±150	±150	±160	±150
Super-elevation resolution	1	1	1	1	1
Track gauge resolution	1	1	1	1	1

Other analogue track gauges :600mm,900mm

■ Railway Square Ruler (T ruler)



Product introduction

Railway square ruler is a special measuring tool used to check the right Angle dislocation of railway track.

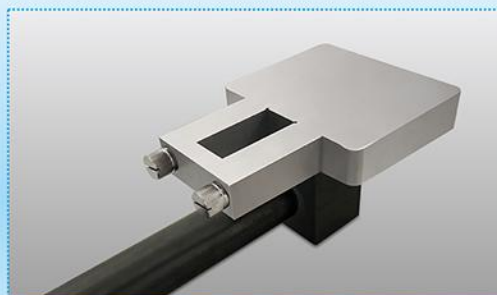
Multifunctions :

- 1.Measure the switch angle steel whether is square when installed
- 2.Measure the internal lock switch parts whether is square when installed
- 3.Measure the switch rail whether creeping
- 4.Measure the sleeper whether square when installed.

Model parameters

Model	Size	unit(mm)
LJFG-I	1760mm	
LJFG-IA	2000mm	

■ Portable Track Gauge Calibrator



Product introduction

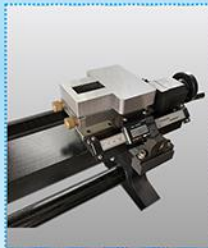
The portable track gauge calibrator is used to calibrate the 1435mm track gauge. It can calibrate the track gauge, check rail gauge and guard rail face gauge, and check the correctness of the superelevation zero position.

Model parameters

unit(mm)

Model	LJ-JDQ-III
Calibration range	
Track gauge	1435
Check rail gauge	1391
Back to back distance	1348
Calibration	± 0.2

■ Calibrator For Railway Track Gauge



Product introduction

The calibrator is a railway measuring instrument that used to calibrate the 1435mm track gauge, check rail gauge, back to back distance, super elevation.

Model parameters

unit(mm)

Model	Calibration	Measurement range	Max error	
			Zero position	±0.04
LJ-JDQ-I	Track gauge	1410~1470	Nonzero position	±0.06
	Super elevation	Super elevation special gauge part 30mm、60mm、120mm、180mm Use according to the measured value	±0.06	

■ Rail Wear Gauge

LJ-GM-A



Product introduction

Rail wear gauge (rail head loss gauge) is mainly used to measure the vertical wear and lateral wear of the rail. The reasonable design makes it convenient operation and intuitive reading.

LJ-GM-B



Model parameters

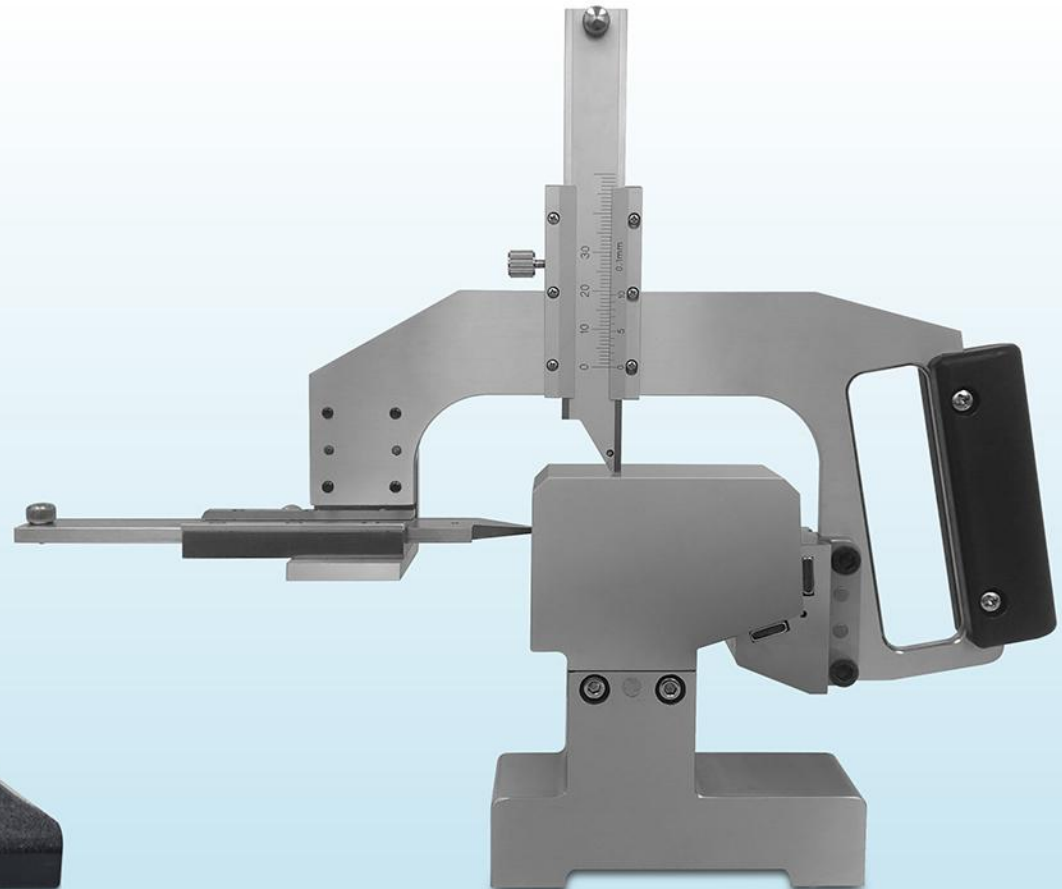
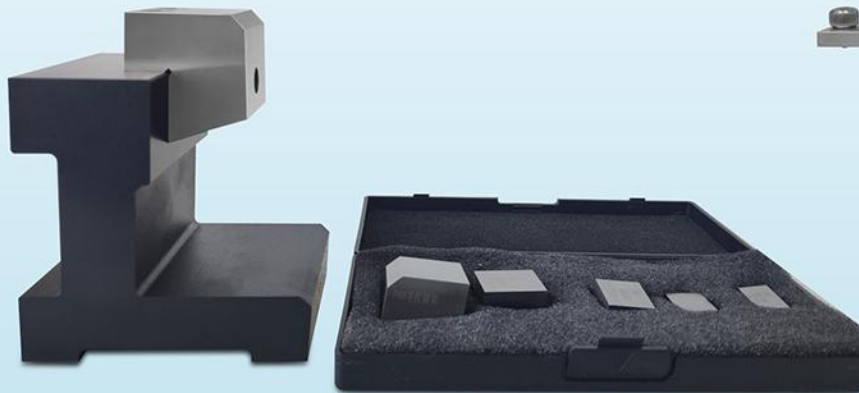
unit(mm)

Model	LJ-GM-A	LJ-GM-B
Type	Digital	Mechanical
Vertical rail wear	0-15	0-15
Lateral rail wear	0-25	0-25
Score value	0.01	0.1
Customize	yes	yes
Option device	Gauge block for wear gauge fast calibration	

■ Rail Wear Gauge Block

Product introduction

The Rail Wear gauge block is used for calibrating and measuring the Zero error and indication error of the rail wear gauge. It can be customized to rail profile. It is made up of the base, Standard reference block and deputy blocks.

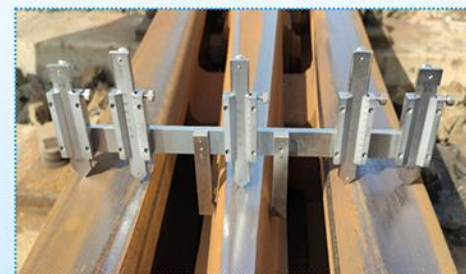


■ Rail Frog Wear Gauge

LJ-GM-A



LJ-GM-B



Product introduction

Rail frog wear gauge is used for special measuring tools of railway maintenance department for frog and wing rail wear value.

Model parameters

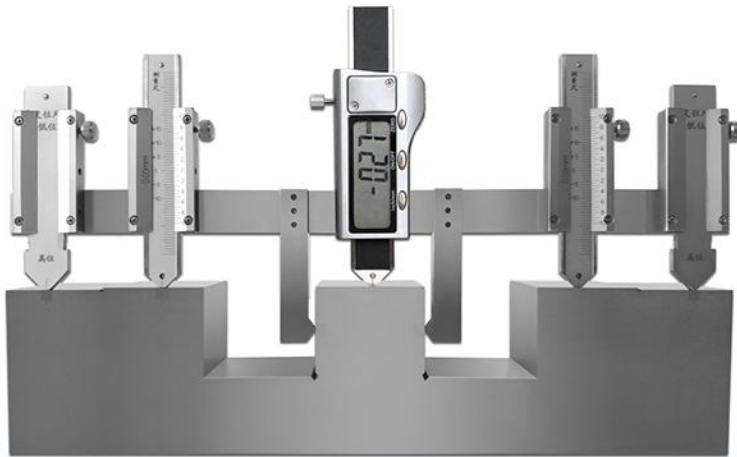
unit(mm)

Model	LJ-ZC-A	LJ-ZC-B
Type	Digital	Mechanical
Wing rail vertical wear	-10~15	-10~15
Frog point rail vertical wear	-10~15	-10~15
Accuracy	0.01	0.05
Indication error	±0.01	±0.3

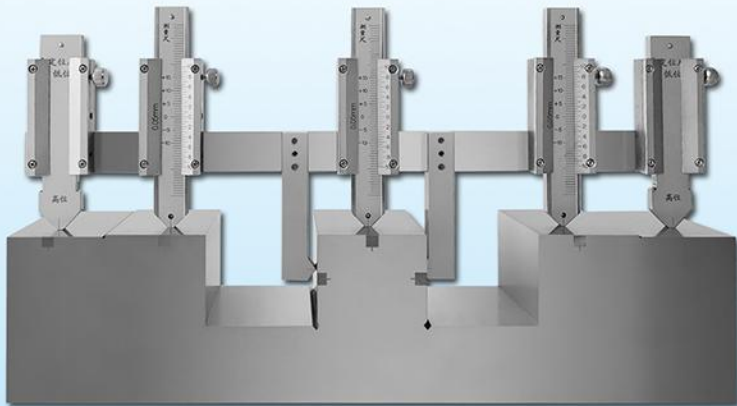
■ Rail Frog Wear Gauge Block

Product introduction

Rail frog wear gauge block is used for calibrating and measuring the rail frog wear gauge. It is made up of the E type calibration block and measuring blocks.

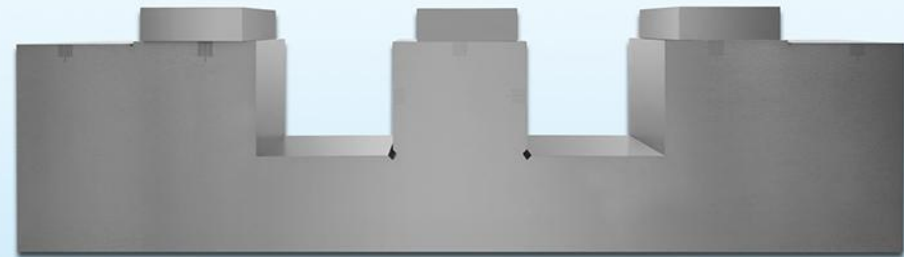


Apply for the digital gauge



Apply for the Mechanical gauge

Model: LJ-ZC-LK



E type calibration block with the measuring Blocks

■ Switch Rail Lateral Wear Gauge

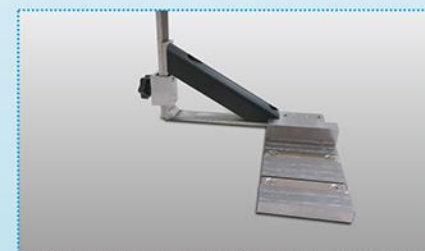


Product introduction

The Switch Rail Lateral Wear gauge is used to measure the switch rail lateral wear and the descent height value of the switch rail ,this device can be used for all types of switch rail.

Model parameters

Model	LJ-JGCM-I	unit(mm)
Type	1.Vertical Ruler:Digital 2.Lateral Ruler:Digital	
Measure range	1.Vertical Ruler:92-193mm 2.Lateral Ruler:0-120mm	
Resolution	Digital ruler:0.01mm	
Calibration block	Optional	



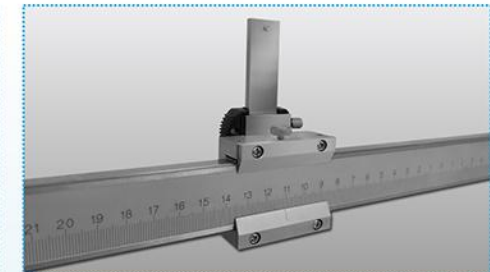
■ Digital Rail Corrugation Wear Gauge

Product introduction

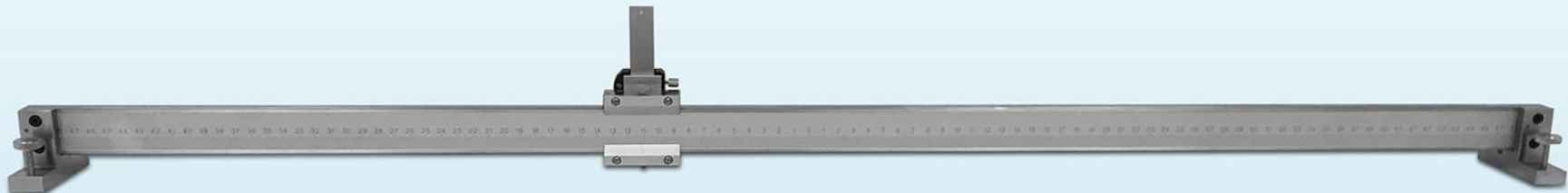
This digital corrugation wear gauge is a direct reading measuring tool which is using straight vertical measurement method. It is mainly used for rail top surface and position surface corrugation wear data measurement.



Product front



Product reverse



Model parameters

unit(mm)

Model	LJ-BM-A
Horizontal Measure Range	1000mm
Vertical Measure Range	-8 ~ +25mm
Accuracy	±0.05mm
Resolution	0.01mm
Repeat error	0.02mm
Working temperature	-5°C~40°C

■ Switch Rail Height Gauge



Product introduction

The Switch rail height gauge is mainly used to measure the descent height value of the switch rail relative to the running rail and point rail relative to the wing rail.

Measurement Project :

- The descent height value of the switch rail
- The descent height value of the point rail
- The height of switch roller
- The height of check rail

Model parameters

unit(mm)			
Model	LJ-JGJD-I	Working Temperature	-10℃~+55℃
Measurement Range	-5~30	Working Humidity	≤93%RH
Measurement Accuracy	0.05	Power Supply	Button battery (1.5V)
Screen resolution	0.01	Main Material	Stainless steel, aluminum alloy
External Dimension	270*22*180	Weight	1.45kg

■ Rail Opening Gauge



Product introduction

Rail opening gauge is mainly used for measuring turnout opening and offset gauge. Small design and convient to use for some special measuring points.



railway switch opening measurement



railway offset measurement

Model parameters

unit(mm)

Model	JG-KC01
Type	Electronical
Opening measure range	0-350mm
Offset measure range	0-350mm
Accuracy	±0.25mm
Customize	yes
Working temperature	-30°C ~ +55°C

■ Contact Rail Gauge

Product introduction

The contact rail(third rail) gauge is for measuring the parameters of the subway contact rail . (Customized)

Model parameters

unit(mm)

Model	Horizontal measure range	Vertical measure range	Accuracy
LJ-JCG-I	Customize	Customize	± 0.5 mm



■ Platform Gauge

Product introduction

Platform measuring ruler is to measure the distance between the railway track center and the platform flank and the height between the rail surface and platform plane. (Customized)

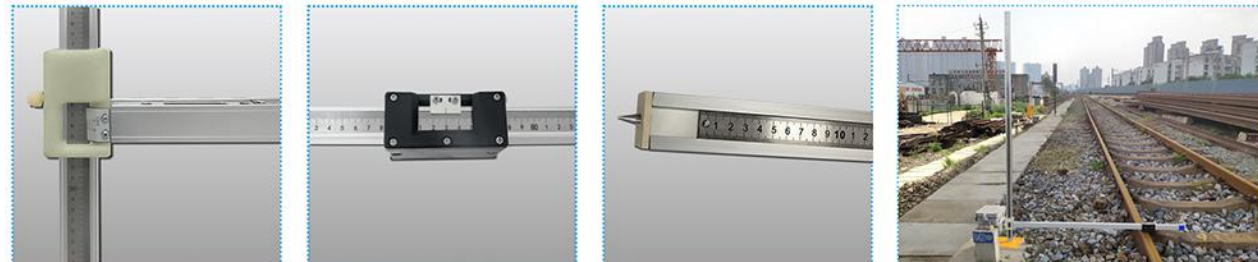
Model parameters

unit(mm)

Model	Horizontal measurement range	Height measurement range	Accuracy
LJ-TC-1	1500-2200mm	200-1300mm	± 1 mm



■ Rail L-shaped Track Ruler



Product introduction

L-shaped track ruler(right-angle track) is a special measuring tool used for measuring the distance between the inner side of railway track and the base mark and the height between the plane on the rail and the base mark.

Model parameters

unit(mm)	
Model	LJ-L-I
Horizontal measurement range (distance between the inner side of rail and base mark)	different sizes: 100-1000, 100-1200, 100-1500, 100-2000
Height measurement range (distance between the plane on the rail and the base mark.)	different sizes: 100-1000, 100-1500, 100-2000
Accuracy	±1

■ Rail Offset Ruler



Product introduction

The railway offset ruler is special measuring equipment which is used for railway turnout offset distance.



Model parameters

Model	Measure range	unit(mm)	
		Indication error	
TZC-I	100-1300mm	$\leq \pm 0.4\text{mm}$	
TZC-IA	100-1400mm	$\leq \pm 0.4\text{mm}$	
TZC-II	100-2000mm	$\leq \pm 0.4\text{mm}$	
TZC-IF	100-2500mm	$\leq \pm 0.4\text{mm}$	

■ Calibrator For Rail Offset Ruler

Model parameters

Model	unit(mm)	
	Measure range	
ZJQ-2-II S Measure Range	100-1290mm	
ZJQ-2-II L Measure Range	100-1800mm	
Indication Error	$\pm 0.1\text{mm}$	
Material	Cast iron	



■ Digital Rail Offset Ruler



Product introduction

The digital railway offset ruler is special measuring equipment which is used for railway turnout offset distance, and the frame size.

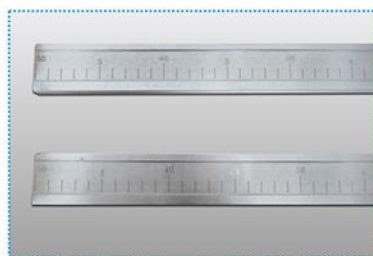
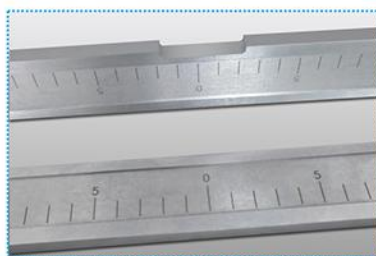


Model parameters

unit(mm)

Model	LJ-SZJC-I
Type	Digital
Measuring Rang	100-1800mm
Indication Error	$\pm 0.4\text{mm}$
Accuracy	0.05mm
Insulation Resistance	$\geq 1\text{M}\Omega$
Weight	2.5KG
Working temperature	$-30^{\circ}\text{C} \sim +55^{\circ}\text{C}$

■ 1 Meter Rail Straight Edge



Product introduction

This item is used to check track rail from any deflections before and after welding.

Model parameters

unit(mm)

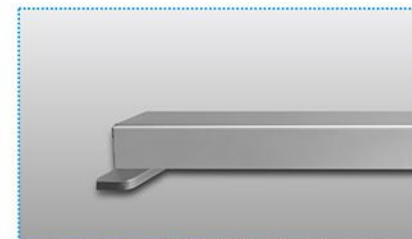
Model	LJ-PC-1000
Measurement range	-50~+50
indication error	≤ 0.04
Type	1.No groove 2. With groove

■ Digital Rail Straight Measuring Ruler



Product introduction

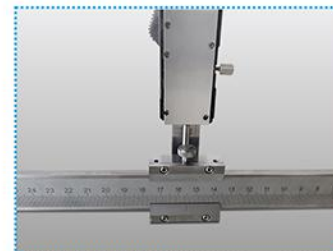
This ruler combination include rail feeler gauge, rail gap ruler and steel ruler



Model parameters

unit(mm)	
Model	LJ-ZD-I
Measurement range	± 5
indication error	$\leq \pm 0.06$
Type	1000

■ Frog Vertical Wear Gauge



Product introduction

Frog vertical wear gauge is used to measure vertical wear value of frog point rail and wing rail at any sections. Also could be used for measure the decrease value of point rail relative to wing rail. It has the advantages of high measuring accuracy, easy to operate, high reliability, small volume, light weight ect.

Model parameters

unit(mm)

Model	LJ-CZM
Measure range	0~40mm
resolution	0.01mm
Working temperature	-10℃~+40℃
Main ruler scale	0mm~380mm
Reading accuracy	1mm
Dimension	380mm×166mm×25mm

■ Rail Web Width Measuring Device



Product introduction

Rail Web Width Measuring Device is a kind of measuring instrument for measuring the rail web width

Model parameters

Model	Measure range (mm)	Accuracy (mm)	unit(mm)
			Repeatability of indication value (mm)
LJ-GK-A	0—120	0.01	0.05

■ Rail Feeler Gauge



Product introduction

Feeler is one of the measuring instruments used for inspection clearance .

Model parameters

Model	Blade thickness
17P	0.02-1.0mm
20P	0.05-1.0
23P	0.02-1.00mm

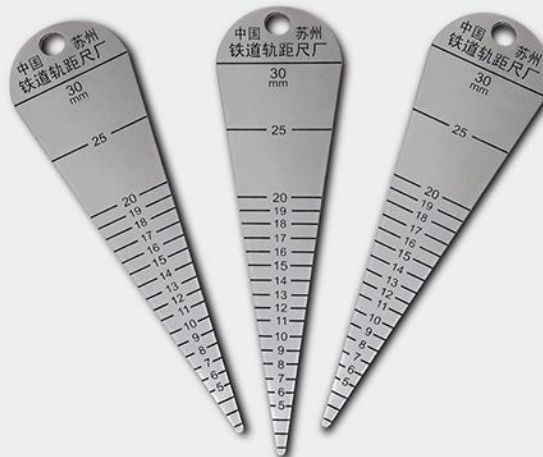
unit(mm)



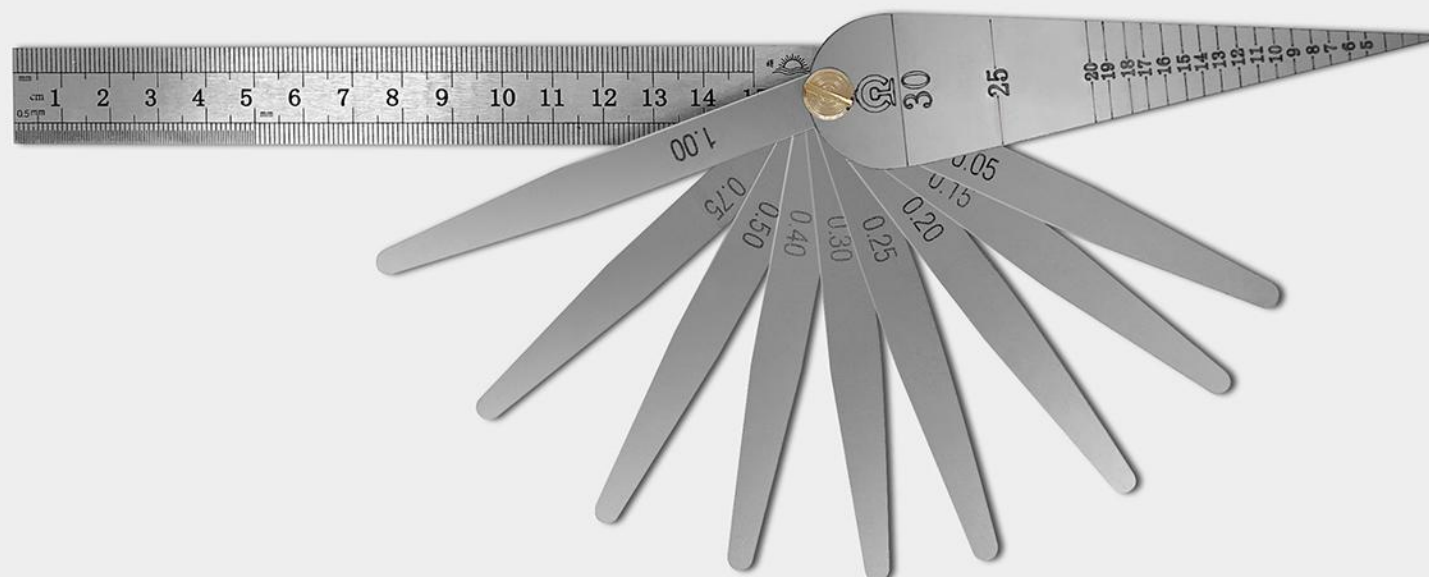
■ Rail Gap Ruler

Product introduction

Rail gap ruler is ues for measuring rail gap.
Szie measuring range:5-30mm



■ Rail Feeler Gauge Gap Ruler Combination



Product introduction

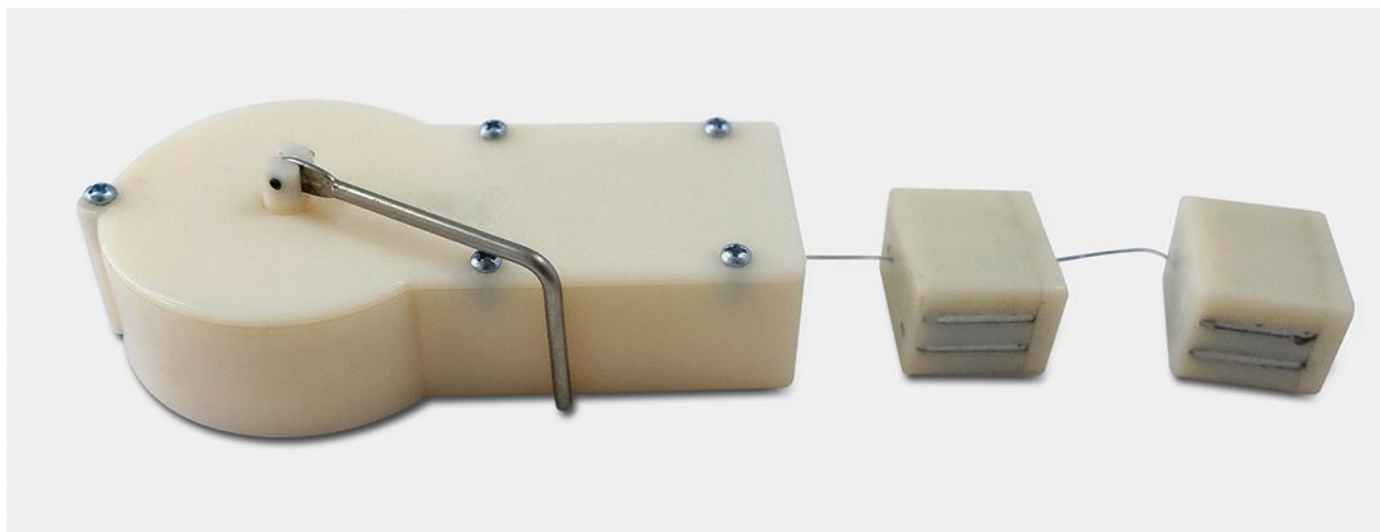
This ruler combination include rail feeler gauge, rail gap ruler and steel ruler

Model parameters

unit(mm)

Model	Measuring range
Rail Feeler Gauge	0.05mm,0.15mm,0.20mm
	0.25mm,0.30mm,0.40mm
	0.50mm,0.75mm,1.00mm
Steel Ruler	1~15cm
Rail Gap Ruler	5-30mm

■ Rail Curve Measuring Tools



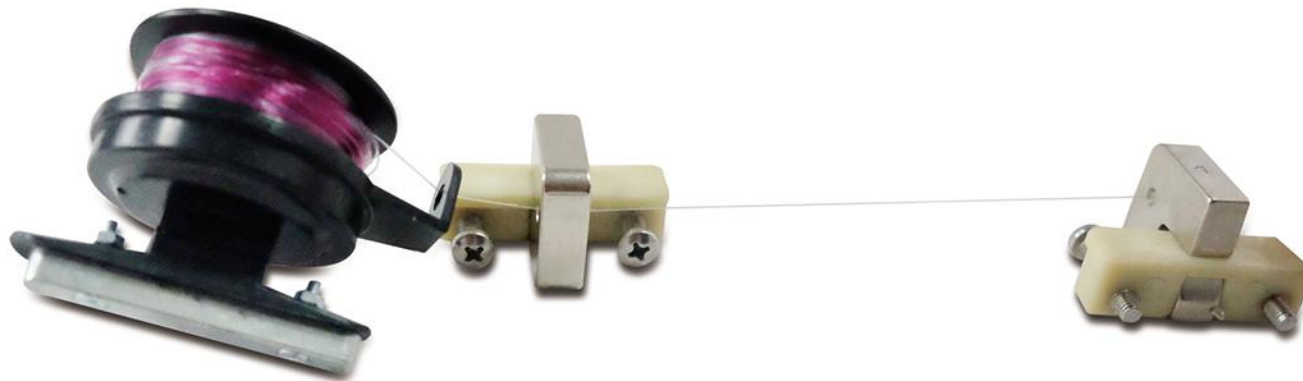
Product introduction

For easy checking and determination of versines intrack curves.
It can be used for all common rail profiles.
Magnet type.

Model parameters

Model	Measuring Range	Weight	unit(mm)
			Dimension
ZSH-20	20	153g	113*66*26mm
ZSH-30	30	154g	113*66*26mm
ZSH-40	40	155g	113*66*26mm
ZSH-50	50	156g	113*66*26mm

■ Rail Curve Measuring Tools (50M)



Product introduction

String line rail curve measuring tool, is also called string line box for railway curve measurement. It is a necessary tool for railway works construction. Curve positive vector measuring box is a regular work in rail line maintenance. In order to facilitate the work of the worker to complete this job, a new line curve positive vector measuring box has been development.



Model parameters

unit(mm)			
Model	Measuring Range	Weight	Dimension
ZSH-50	50m	210g	133*66*26mm

■ Laser Curve (Versine) Device



Product introduction

This portable device offers you a modern method to measure track level and line to aid track measurement and hand tamping operations. It is special suitable for working at night.

Model parameters

unit(mm)

Model		LJ-BXJG
Measure distance		30m
Center laser spot		<10mm (at 30m)
Point range	horizontal	(-30~+50) mm
	vertical	(-30~+50) mm
Accuracy		2mm
Gross weight		1.5Kg
Battery		2000mAh (continuous using 5-6hours)

■ Pointer Rail Thermometer



Product introduction

Magnet pointer rail thermometer is used to measure the temperature of rail. rail thermometer is not only dedicated to measure the temperature of the railway rails, but also can measure the air temperature and the surfacetemperature of other objects.

Model parameters

Model	Temperature measuring range	Division value	unit(mm)
			Accuracy level
JGGW-II	-40~+70℃	1℃	1.0℃

■ Rail Cant Device



Product introduction

The device is mainly for measuring rail inward inclination (cant) 1:40 or 1:20. In order to make the top of the rail track under the wheel load with cone tread stressed uniformly, decrease load offset, reduce rail web stress, avoid slit between rail head and rail web, the railway track shall not be laid upright for straight line,

Model parameters

unit(mm)

Model	JG-S01
Power Supply Mode	Built-in lithium battery charging
Operating Voltage	3.5V~4.2V
Charging Voltage	4.5V~5.5V
Operating Current	40mA
Operating Temperature	-30°~+60°
Display	OLED
Measuring Range	±1:10~ ±1:200
Size	225*90*60mm
Weight	1.4KG

■ Digital Rail Thermometer



Model parameters

Model	JGGW-1
Temperature range	-60℃—+100℃
Size	108*72*25cm
Maximum permissible error	±1℃
Power	≤0.12W
Weight	≤90g

unit(mm)

Product introduction

The digital display rail thermometer adopts PT100 linear temperature sensing, the probe adopts copper embedded integrated technology, has the function of waterproof and pressure-proof and earthquake-proof, and the product is designed with a railway track digital display thermometer with power prompt and power shortage alarm function.



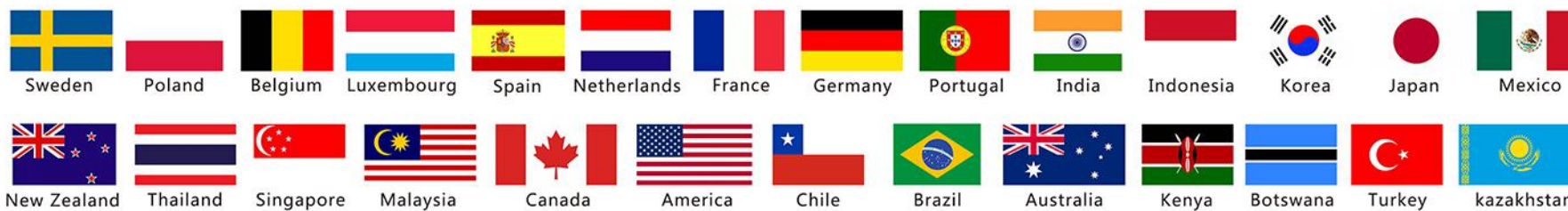
CERTIFICATE

Professional and trustworthy
look forward to working with you





**We serve many countries around the world!*



Add: No.1 Qilin Road, XiangCheng District, XiangYang City, Hubei Province, China

Email Address: info@xyljtd.com

Website: www.linkrailtech.com