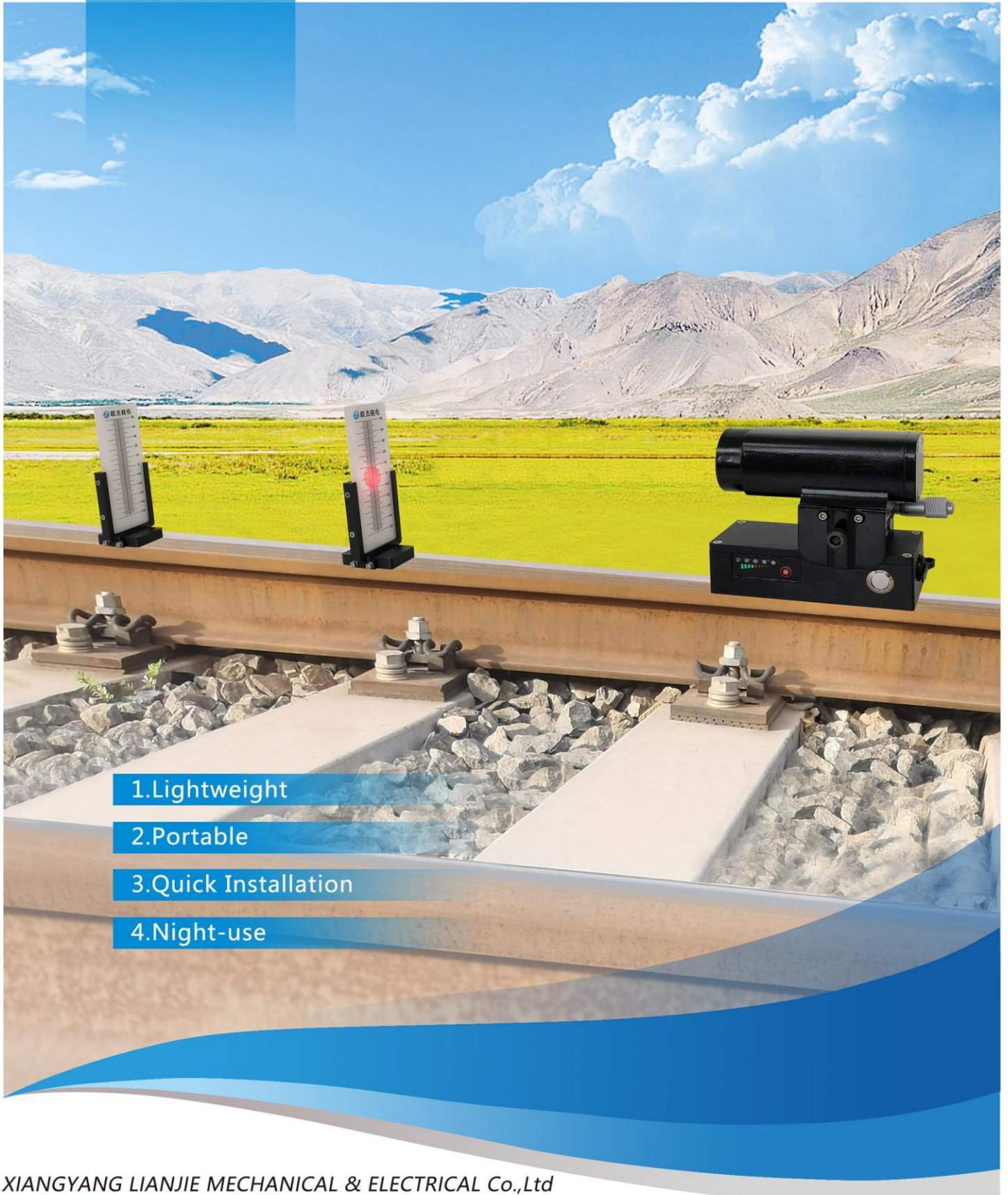




LIANJIE

LJ-BXJG

Laser Alignment Device



- 1. Lightweight
- 2. Portable
- 3. Quick Installation
- 4. Night-use

• **Introduction:**

Laser Alignment Device is used for measuring track level and line to aid track measurement and hand tamping operations. It can measure the Horizontal and the Vertical . It is mainly composed of laser transmitting device,target positioning device and moving positioning target device,



Laser Transmitter



Moving Target



Position Target

1.Quick Installation

The operator can put this device on the track in seconds

2.Saving money in repeat work and accuracy

30m at a time with 100% reduction on repeat works and rapid deployment

3.Vernier adjustment knob ensuring accurate readings

The vernier adjustment knob assist the operator to ensure a perfect horizontal position ensuring accurate readings

Package



Main Technical parameter :

Model		LJ-BXJG
Laser measure distance		30m
Laser center spothorizontal		< 10mm (30m distancearea)
Point range	horizontal	(-50 ~ +50) mm
	vertical	(-50 ~ +50) mm
target positioning device and moving positioning target device resolution		1mm
1 Battery capacity (laser transmitter)		Continuous use for 4 hours

✉ info@xyljjd.com

🌐 <http://www.linkrailtech.com>

📍 Company Add: Sifu Technology Industrial Park No.1 Qilin Road, XiangCheng District ,XiangYang City, Hubei Province, China